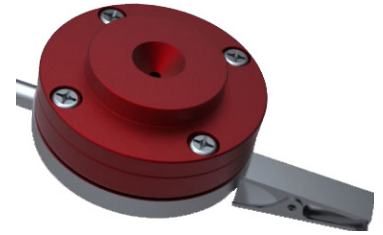
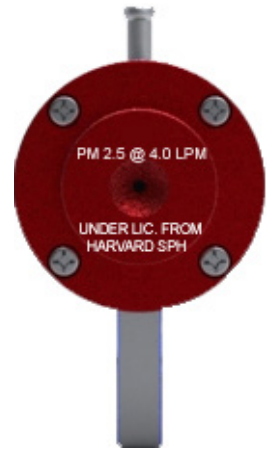


H-PEM PM₁₀ PM_{2.5} and PM₄ Personal Impactor

The Harvard Personal Exposure Monitor (H-PEM) is a development of the Environmental Science and Engineering Group at the Harvard School of Public Health. It is a group of four impactors designed to be worn on the person in order to closely gauge their exposure to PM_{2.5}, PM₄ or PM₁₀ concentrations at different flow rates. The use of silicon grease eliminates the bias found when particles impact dry surfaces. A separate adapter is required when the pump is used with any H-PEM.



Side view of H-PEM



Top view of H-PEM

Part Number	Color	D ₅₀ Cut (µm)	Flow Rate (LPM)	Pressure Drop ⁴ Cm of H ₂ O
3243-3237	Blue	10	4	6
3243-3236	Red	10	1.8	6.4
3243-3230	Blue	2.5	4	1.23
3243-3229	Red	2.5	1.8	2.5
3243-3780	Blue	2.5	6	7.2
3243-3781	Red	4	9	10.5

⁴Pressure drop is measured with Pall Teflo R2PJ 037 filter installed.

H-PEM Specifications

Diameter:	2.10 in. (5.34 cm.)
Thickness:	0.97 in. (2.46 cm.)
Weight:	2.72 oz. (77 grams)
Length of Suction Hose:	36 in. (.91 m)
Material of Construction:	Anodized Aluminum

H-PEM Ordering Information

Part # 3243-3237:	H-PEM 10 µm @ 4 LPM
Part # 3243-3236:	H-PEM 10 µm @ 1.8 LPM
Part # 3243-3230:	H-PEM 2.5 µm @ 4 LPM
Part # 3243-3229:	H-PEM 2.5 µm @ 1.8 LPM
Part # 3243-3780:	H-PEM 2.5 µm @ 6 LPM
Part # 3243-3781:	H-PEM 4 µm @ 9 LPM
Part # HP3312:	Calibration adaptor f/ above units

H-PEM PM₁₀/PM_{2.5}/PM₄